

**Notes on Chalcidoidea. VI**  
**Description of two new species and the male of *Dasyneurophaga japonica* Heqv. (Eulophidae and Pteromalidae)**

By  
KARL-JOHAN HEQVIST

***Entedon stephanopachi* sp.n. (fig. 1)**

♀. Bluish black, metallic, with tint of green. Fore legs with knee and a lateral stripe on tibia pale yellow. Middle legs with knee, tibia except basal part and 1st tarsal joint yellow. Hind legs of the same colour as middle legs. Wings hyaline, fore wings with veins pale brown.

Head as broad as deep. Antennae (fig. 2 A), 11232, inserted on level with the anterior margin of the eyes. Scape not reaching mid ocellus. Pedicel shorter than first funicle joint. Anellus with first joint much longer than 2nd joint. Clava somewhat longer than 1st funicle segment. Sensillae few. Eyes large drop-shaped, and with few short hairs. Malar space much shorter than breadth of the eye. Clypeus anterior margin straight. Mandibles with 3 teeth. Between toruli a short wedge-shaped, large carina. The face has hexagonal punctures, the squares are large. Occiput margined. Pronotum short with a narrow collar. Scutellum large, longer than mesoscutum. Promesothorax and scutellum with hexagonal punctures, the squares very large, especially on mesoscutum. Propodeum (fig. 2 C) large with a median carina. Spiracles ovale. Gaster longer than thorax and head, lanceolated, apical part hairy. Fore wings with a large basal cell. Postmarginalis longer than stigmalis (fig. 2 D).

♂. Similar to the female but with more green and blue tint. Antennae (fig. 2 B) and face blue metallic. The yellow part of the legs are paler.

Length: ♀. 3—3.5 mm, ♂. 2 mm.

Holotype, Allotype and 2 Paratypes (2 ♀♀) reared from *Stephanopachys* sp. Dalarna, Nås, 12.IV., 1959, coll. B. Ehnström.

This species is similar to *E. lanceolatus* Erdős, to which this species also runs in Erdős's key (1944), but differs in having antennae 9-jointed and the 2nd funicle joint is longer than the first and third funicle joints. The colour is different. Postmarginalis longer than stigmalis and the fore wing more elongate. *E. stephanopachi* sp. n. belongs to the subgenus *Dolichentedon* Erd.

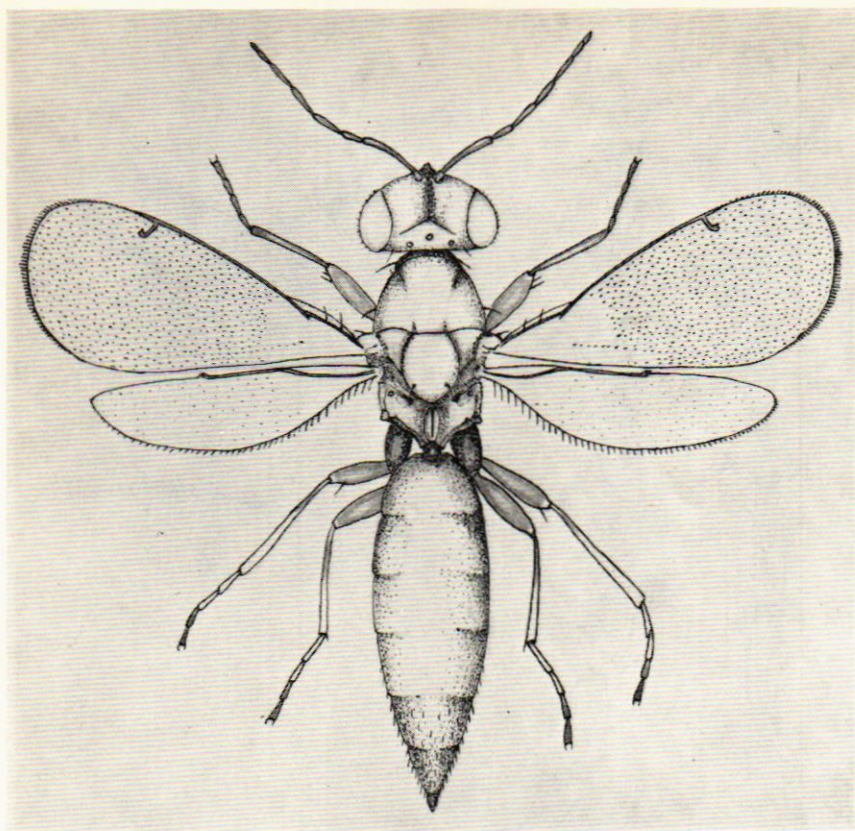


Fig. 1. *Entedon stephanopachi* sp. n. ♀.

***Tetrastichus galerucivorus* sp.n.**

♀. Bluish black with a brownish tint on scutellum and stripes of the same colour (brown) on mesoscutum. Antennae dark brown with basal part of scapus paler. Eyes red. Fore legs with apical part of coxae, trochanter, apical part of femora and tibia yellow and tarsus fuscous. Middle legs with trochanter basal and apical part of femora, tibia and tarsus yellow, claw-joints fuscous. Hind legs of the same colour as the middle legs. Wings hyaline with the veins very pale yellow.

Head semiglobular. Antennae (fig. 4 C), 11133, inserted on level with ventral margins of the eyes. Pedicel longer than 1st funicle joint and clava nearly as long as the funicle joints combined. Mandibles (fig. 4 E) with 3 teeth. Eyes ovale. Malar space shorter than the breadth of the eye. Notaulices complete. Propodeum with a median carina. Head and thorax chagrined, propodeum with very fine reticulation. Legs (fig. 4 D). Gaster obovate. Fore wings



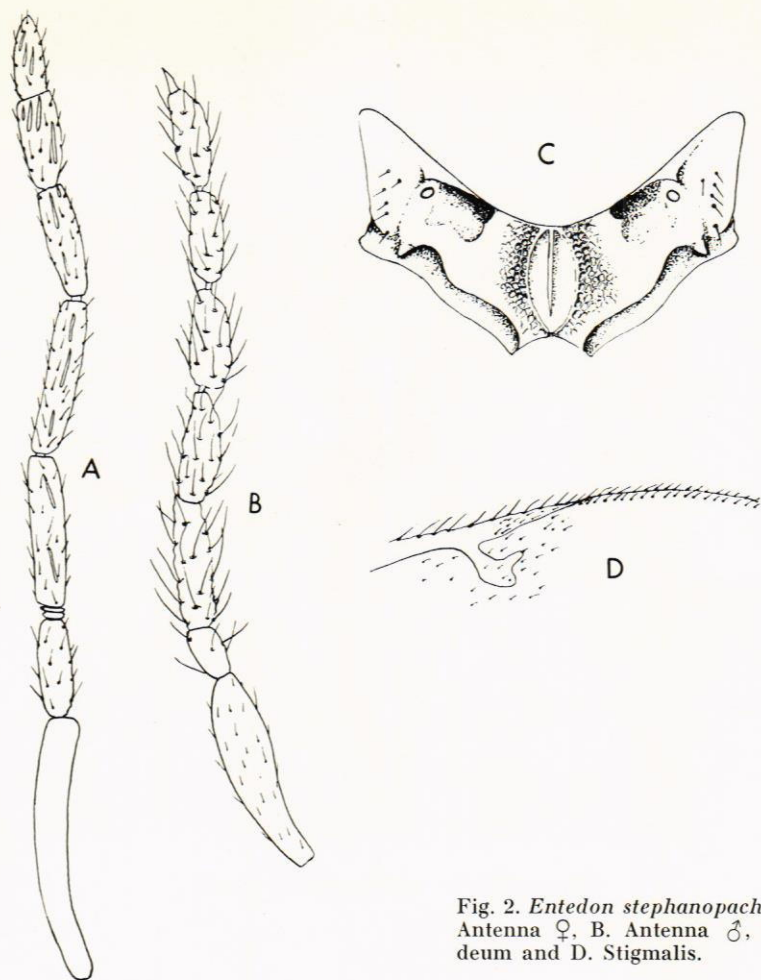


Fig. 2. *Entedon stephanopachi* sp. n., A. Antenna ♀, B. Antenna ♂, C. Propodeum and D. Stigmalis.

with a large basal cell and a speculum, the later isolated from the basal cell. Submarginalis with 1 bristle.

♂. Similar to the female but more entirely bluish black without brown spots on scutellum and mesoscutum. Antennae (fig. 4 A and B), 11233, with yellow scapus and pale brown-yellowish brown, on the remainder part of the antennae. Legs more yellow. Genitalia see fig. 4 F.

Length: ♀ 0.9—1.1 mm, ♂ 0.9—1.0 mm.

Holotype, Allotype and Paratypes (30 ♀♀ and 20 ♂♂) reared from eggs of *Galeruca tanacetii* L.

*T. gallerucivorus* sp. n. is similar to *T. gallerucae* Fons. but differs by the shorter clava, the scapus shorter than funicle (as long as 1st and 2nd funicle joints) and the colour of legs and antennae.

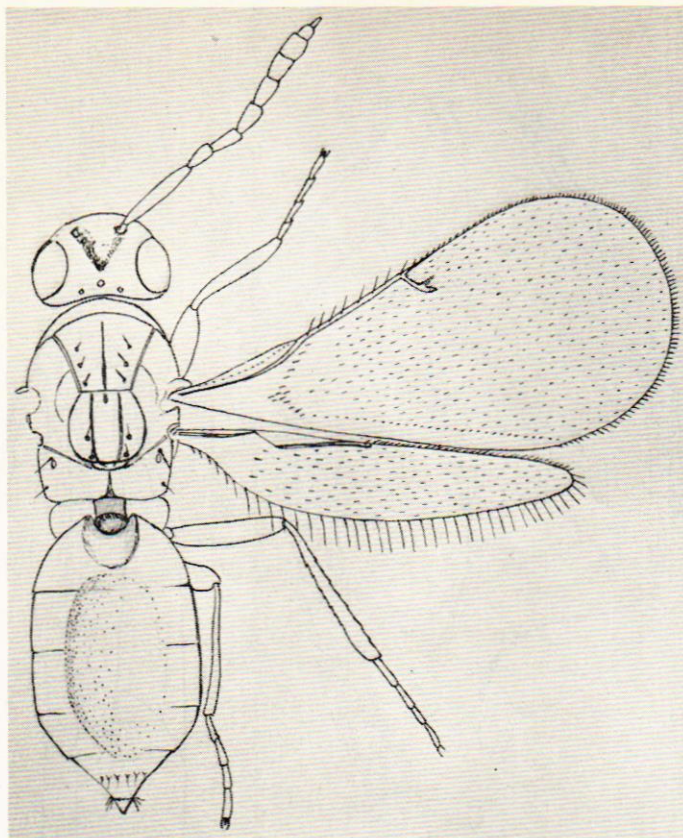


Fig. 3. *Tetrastichus galerucivorus* sp. n. ♀.

***Dasyneurophaga japonica* Heqv.**

Heqvist, Ent. Tidskr. 78, p. 26—27, 1957

Of this species I have found two males among the unmounted material from Japan.

♂. Similar to the female (see description in Ent. Tidskr. 1957). Genitalia see fig. 5.

In his revision of the genus *Mesopolobus* Westw., von Rosen (1958) gave this genus a very broad range but it is possible when we have better knowledge of the species, this genus can be divided in two or several genera. It can be suggested that *Dasyneurophaga* Heqv. should be sunk as a synonym of *Mesopolobus* Westw. (sensu von Rosen) but I think it is better to keep *Dasyneurophaga* Heqv. as a independent genus. I have discussed *Dasyneurophaga* Heqv. with my friend von Rosen and he agrees with me. *Dasyneuro-*

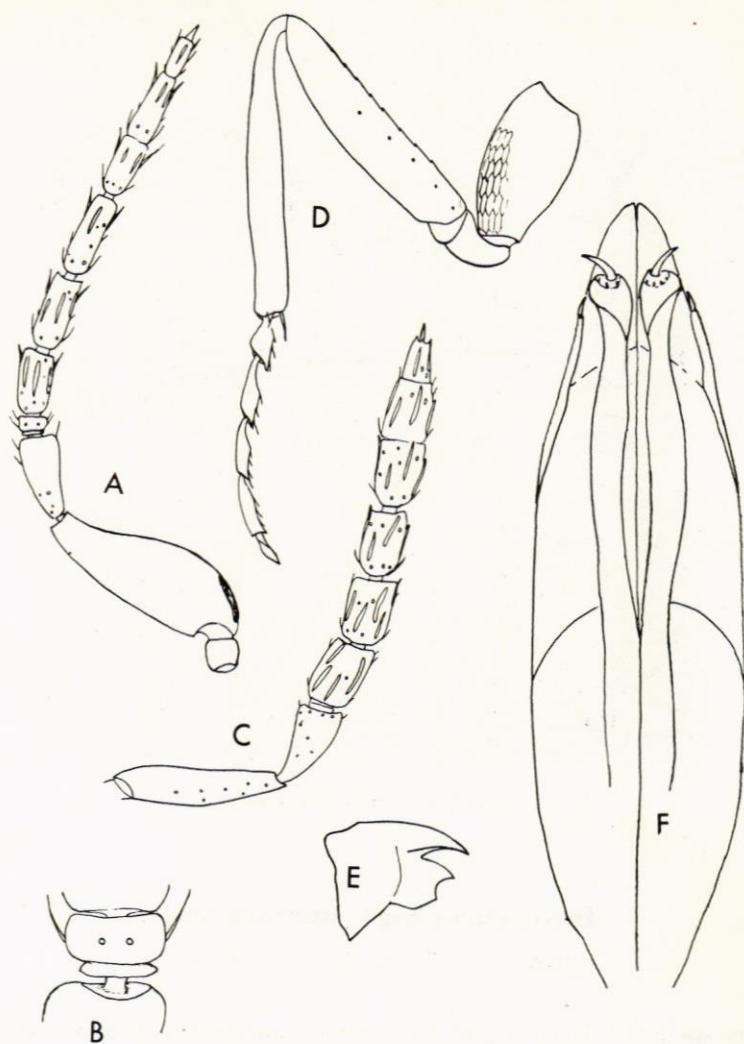


Fig. 4. *Tetrastichus galerucivorus* sp. n., A. Antenna ♂, B. Anellus ♂, C. Antenna ♀, D. Hind leg., E. Mandible and F. Genitalia of male.

*Entomol. Ts. Arg.* 80. H. 3-4, 1959



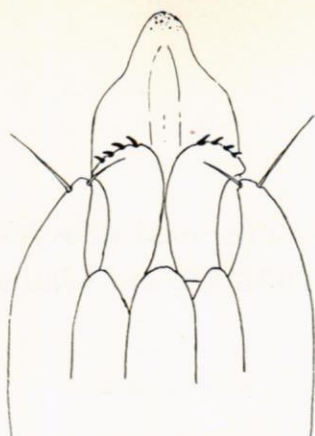


Fig. 5. *Dasyneurophaga japonica* Heqv., genitalia of the male.

*phaga* Heqv. differs from the species of *Mesopolobus* Westw. (sensu von Rosen) through a more stout body, more hairy wings (basal cell with hairs), 2nd segment of the abdomen not longer than the other segments and the body somewhat compressed.

#### Literature

- BOUCEK, ZD. Acta Ent. Mus. Nat. Pragae. **XXXI**, p. 177—181, 1957.  
ERDÖS, J. Species hungaricae generis *Entedon* Dalm. — Kalocsa 1944.  
MARCHAL, P. Bull. Soc. Ent. France. p. 81—83, 1905.  
MASI, L. Boll. Lab. Zool. Gen. Agrar. **III**, p. 131—133, 1908.  
ROSEN, H. VON. Opusc. Ent. **XXIII**, p. 203—240, 1958.